



## hatsoff

Join milliner Anya Caliendo at 7 tonight for her talk at the **West Islip** Library on the history of the couture hat. Sagtikos Manor's hat collection will be on display. Following the lecture, Anya will conduct a millinery **workshop**. Register for the workshop (\$10 supplies) at 516-521-6994 or attend just the discussion.



## fuzzyflora

The Sweetwater African Violet Society will be flaunting its finest this weekend at its 38th annual African Violet **Show and Sale** at the **West Sayville** Fire Department, 2-5 p.m. Saturday and 12-4 p.m. Sunday. Admission is \$2, 631-277-2880.



## index

- |             |                |
|-------------|----------------|
| B15 Ask Amy | B14 Horoscopes |
| B15 Chess   | B20 Kidsday    |
| B12 Comics  | B6 Movie Times |
| B14 Games   | B4 Music       |
| B8 Health   | B7 TV          |



"Creating," created by J. Seward Johnson Jr., sits under a tree at Hofstra University.

# Art without walls

Sculpture gardens bring the gallery experience to the great outdoors

BY SYLVIA E. KING-COHEN  
[sylvia.king-cohen@newsday.com](mailto:sylvia.king-cohen@newsday.com)

**Y**ou expect to see artwork in a museum or gallery — but how about outdoors? Visit sculpture gardens on Long Island and you'll see striking works nestled in a grove of trees or peeking playfully out of a patch of tulips.



**ON THE COVER** The 18-foot "Snake Tree" at the Nassau County Museum of Art

"We don't have a brick and mortar space," says Eliz Alahverdian, a curator at Adelphi University in Garden City. "We want people to live with the art, see it in different seasons and different times of the day."

Although sculptures are supposed to be hands off, Alahverdian understands the urge to touch. "I do sometimes get a little scared

when there's a game of Frisbee a little too close to one of them," she says.

By contrast, the towering steel structures at Nova's Ark Project in Bridgehampton, which showcases the work of the late Nova Mihai Popa, are designed to draw viewers closer. Visitors often are seen touching or even climbing on the sturdy structures, some of which tower 30 feet high.

Here are a few places where art is part of the landscape.

### Adelphi University

1 South Ave., Garden City  
INFO 516-237-8660,  
[adelphi.edu](http://adelphi.edu)  
ADMISSION None  
NUMBER OF WORKS 20

The lawn area next to the University Center is home to 10 oversize sculptures. Only a few steps separate each piece, allowing visitors to contemplate and compare works of the various artists featured.

**MUST-SEES** John Clement's "Duke" is a large, red spiral of welded steel that weighs more than 3,000 pounds; Miggy Buck's "Accountability," is a large pointing hand made of environmental-friendly Aqua-Resin.

"It is designed to make you think of anything and everything you could be accountable for," Alahverdian explains.

The art is part of Adelphi's Outdoor Sculpture Biennial, which runs through

May 2014, when new installations will be on display.

### Hofstra University

Hempstead Turnpike, Hempstead  
INFO 516-463-5672, [hofstra.edu](http://hofstra.edu)  
ADMISSION None  
NUMBER OF WORKS Nearly 60  
— Wear comfortable walking shoes — the stroll to see this massive collection spans the 240-acre campus. Well positioned, the pieces are complemented by the surrounding landscape.

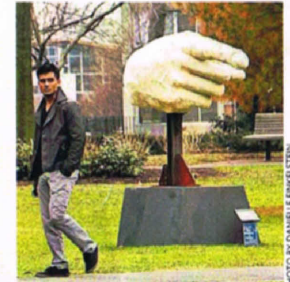
**MUST-SEES** Vinnie Bagwell's life-size bronze of Frederick Douglass; Mihail Chemiakin's "Plato Having a Dialogue With Socrates" even has a built-in seat if you want to join the conversation.

If you have time, visit the Emily Lowe Gallery and pick up a backpack with maps, discussion cards and children's crafts.

### Nassau County Museum of Art

1 Museum Dr., Roslyn Harbor  
INFO 516-484-9337,  
[nassaumuseum.com/sculpture](http://nassaumuseum.com/sculpture)  
ADMISSION Free for sculpture garden; \$2 parking weekends  
NUMBER OF WORKS more than 40  
The grounds outside the art museum are awash with sculptures positioned along walking trails. Pick up or download a map that shows works on the museum's 145 acres.

**MUST-SEES** Niki de Saint Phalle's 18-foot-tall "Snake Tree" is colorfully true to its name; Allen Bertoldi's "Redbank 31 — Nassau Variation, 1978" is a series of walk-through rectangles that is 10 feet high and 89 feet long.



Miggy Buck's "Accountability" at Adelphi is made of nontoxic resin.

### Nova's Ark Project

30-60 Millstone Rd.,  
Water Mill  
INFO 631-537-0004,  
[thearkproject.com](http://thearkproject.com)  
ADMISSION \$15-\$30

NUMBER OF WORKS 30-plus  
Massive sculptures are positioned in sheep meadows and horse pastures on the grounds of this private residence — it's quite a contrast to see horses grazing or running past sharply angled and spherical steel structures.

The project, the brainchild of the late Nova Mihai Popa, is open to the public on select dates in the spring and summer. Visitors can walk the 95-acre property or take a guided wagon tour of the sculptures.

**MUST-SEES** Popa's "Embrace of the Sun," which is a large orb surrounded by smaller ones that often is surrounded by grazing sheep; "Astronauts" involves 22-foot-tall figures that act as sentries, welcoming people into the sculpture fields.



Horses draw a carriage past "Pyramid" in Water Mill.



Find a nearby dance school: [exploreLI.com/weddings](http://exploreLI.com/weddings)